



Mixing Coffee and Water

At the beginning of the class we will be mixing instant coffee with hot water to get a light, medium, and dark tone. If you would like to mix your coffee ahead of the class here are the instructions.

From the supply list, you will need

- 4 cups/dishes or a palette
- instant coffee
- hot water
- a stick or spoon for mixing
- rags or a paper towel

We will mix a dark, medium, and light tone using a palette or 3 cups/dishes. A fourth dish can be used for rinsing/cleaning your brush.



For each tone mix

- **dark:** 2 tsp instant coffee + 1 tsp hot water
- **medium:** 2 tsp instant coffee + 2 tsp hot water
- **light:** 2 tsp instant coffee + 4 tsp hot water
- the lightest tone is from the water used to rinse/clean the brush



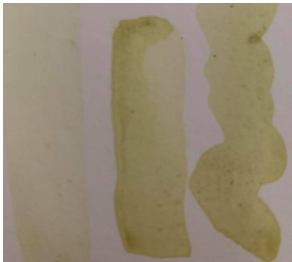
Mixing Tea and Water

To add a splash of color with tea we use green tea for a light green hue and a berry flavored (black) tea for a bluish gray hue. To darken these tones you can add layers and to lighten you can add water.

From the supply list, you will need

- 2-3 cups/dishes or a palette
- at least 2 tea bags of green tea
- 1 tea bag of berry tea (a black tea in any berry flavor)
- hot water
- a spoon for mixing
- rags or a paper towel

If you would like to mix your tea ahead of the class here are the instructions.



For a light green color steep

- 2 bags of green tea + 6 tsp of hot water



For a bluish gray hue steep

- 1 bag of berry tea + 3-4 tsp of hot water
 - depending on the flavor of berry tea you may get more of purplish gray hue